

*HISTORY OF  
INTERIOR  
ARCHITECTURE &  
DESIGN*

THE DEVELOPMENT OF DESIGN

---

INT61\_2

# INT61\_2

TUTOR PATRICIA PASQUAU

9

## WORKSHOP I

15

## WORKSHOP II

19

## WORKSHOP III

25

## WORKSHOP IV

1

WORKSHOP

# CONTEMPORARY ARCHITECTURE



STUDY CONTEMPORARY ARCHIECTS





## HISTORY

---

*Designed by*  
**Peter Zumthor**

*location in*  
**Nestled in Valsertal Valley**

Peter Zumthor is a swiss architect born in Basel. He is known for his uncompromising minimalist style that is pure, austere structured. His work has been described as timeless and poetic. Zumthor always puts a major focus on the sensuality of spaces. For him, sensory experience is what helps you make memories of a place.

He has this philosophical approach that architecture should always be a firsthand experience, and not what you are taught or told through readings or pages of books. The environment inspires Zumthor, he tries to integrate local building and artisan traditions wherever possible. He studied at the Pratt Institute in New York, he has completed about ten projects, considered milestones in contemporary architecture.

Personally, I love his design and his thought process when designing. The building on the left is a building he designed in Switzerland. I think it's absolutely stunning. He has an eye for simplicity and details. It's a fine piece of art in contemporary architecture.

“In order to design buildings with a sensous connection to life, one must think in a way that goes far beyond form and construction.”

- Peter zumthor

# Peter Zumthor

---





HISTORY

*Designed by*  
**I . M . PEI**

*location in*  
**Colorado, USA**

I.M: Pei is a Chinese-American architect who migrated to America when he was just 17 years old. He started studying at the University of Pennsylvania but changed to the Massachusetts institute of technology studying architecture and engineering. He is famous for his large, elegantly designed urban buildings and complexes.

He designed this building for his own firm and it was completed in 1966, he was inspired by an American indian cliff dwelling in southwest colorado, the building overlooks the city and has the rocky mountains as a backdrop.

I think overall the building is beautiful, the materials used to match with its surroundings with the color, I wouldn't have thought the claystone would be fit for cold surroundings by I think it's very appropriate. Claystone is good for cold and hot climates because it keeps the heat and cold away.

“Architcture is the very mirror of life. you only have to cast your eyes on buildings to feel the presence of the past. the spirit of a place; they are the reflection of society.”

- I . M . Pei

I.M. PEI

## MATERIAL INNOVATION



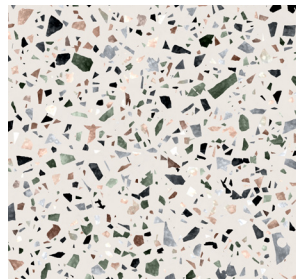
NIKE SHOWROOM



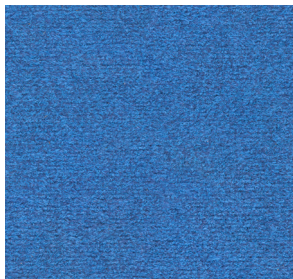


# FLOOR PLAN

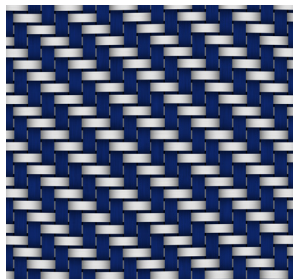
SHOWROOM



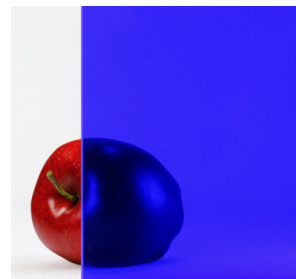
This material is made of small plastic pieces that are recycled into a mold. I think the look is really cool and unique and is a smart way to make waste into an aesthetic



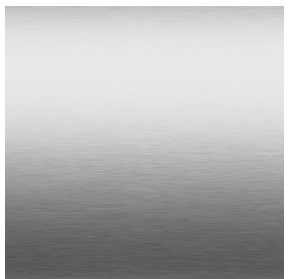
Carpets are often seen in stores but never in a bright colour, i think it attracts and is very interesting to the eye. The color is so vibrant it's almost a little disturbing to the eye, I think it's perfect for the showroom.



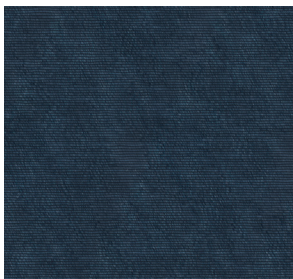
This crisscross pattern is so cool and is not a common style to have in a showroom, so it stands out from other showrooms. The material is made of white and blue plastic bags placed on top of each other to create this cool design



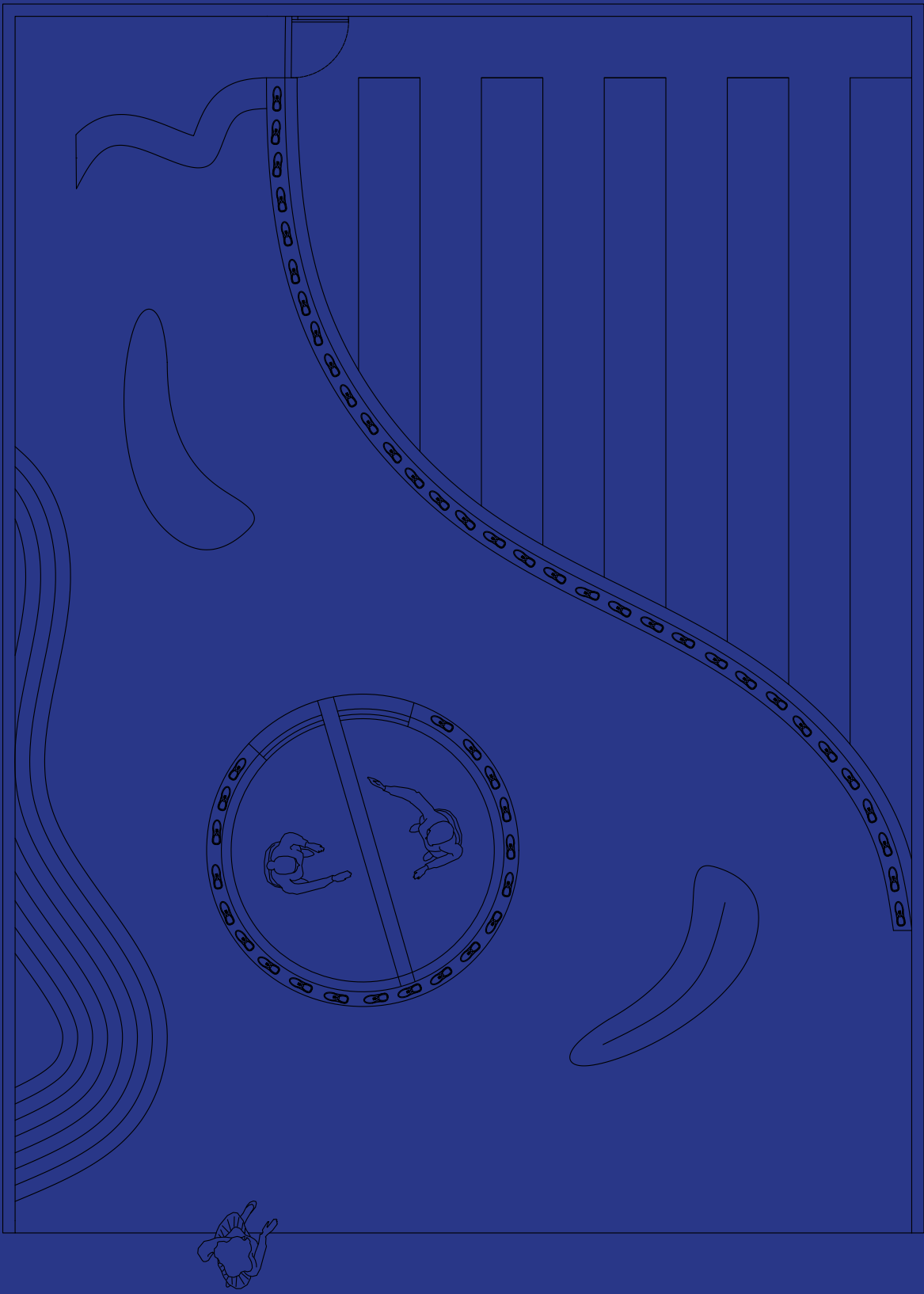
I used blue clear glass for a different look, the glass is a little transparent but not fully so you can see everything through it.

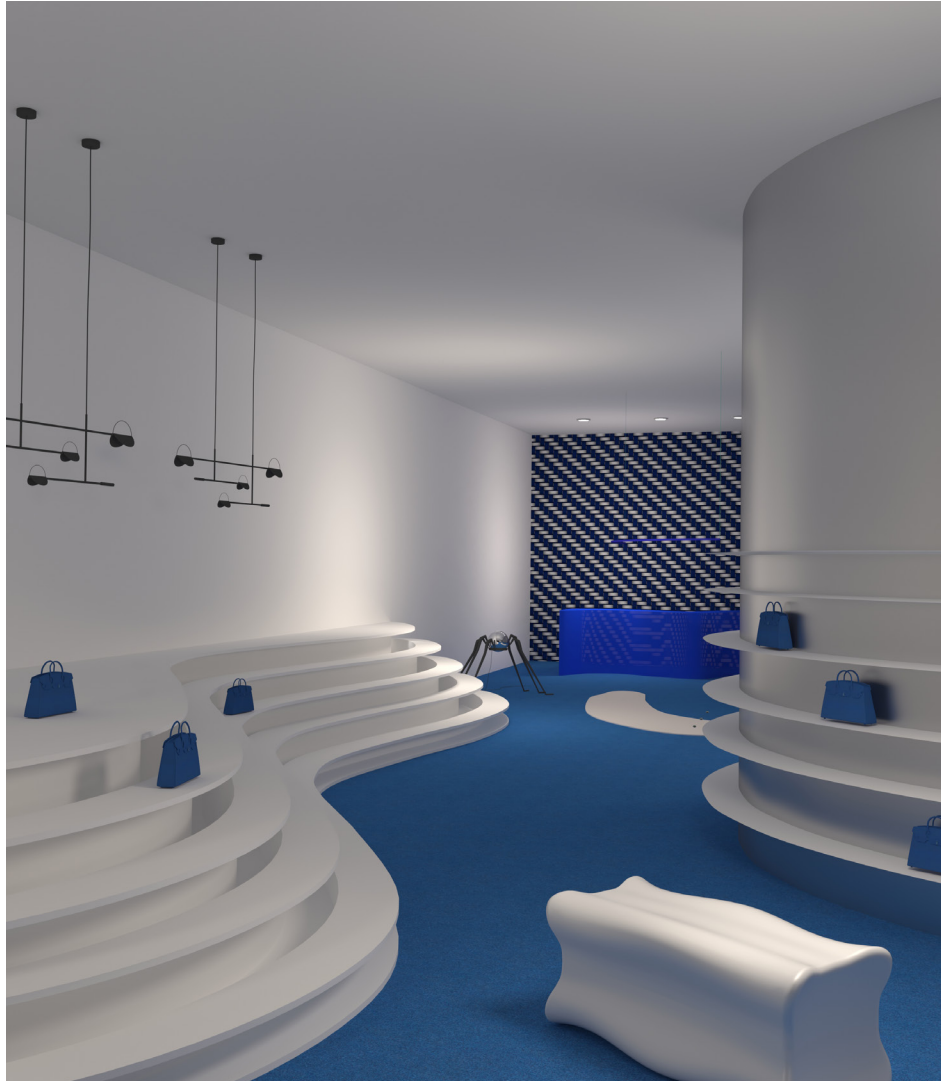


I used this metal/steel in space gray for a futurist look, it reminds me of a spaceship which is thought was cool.



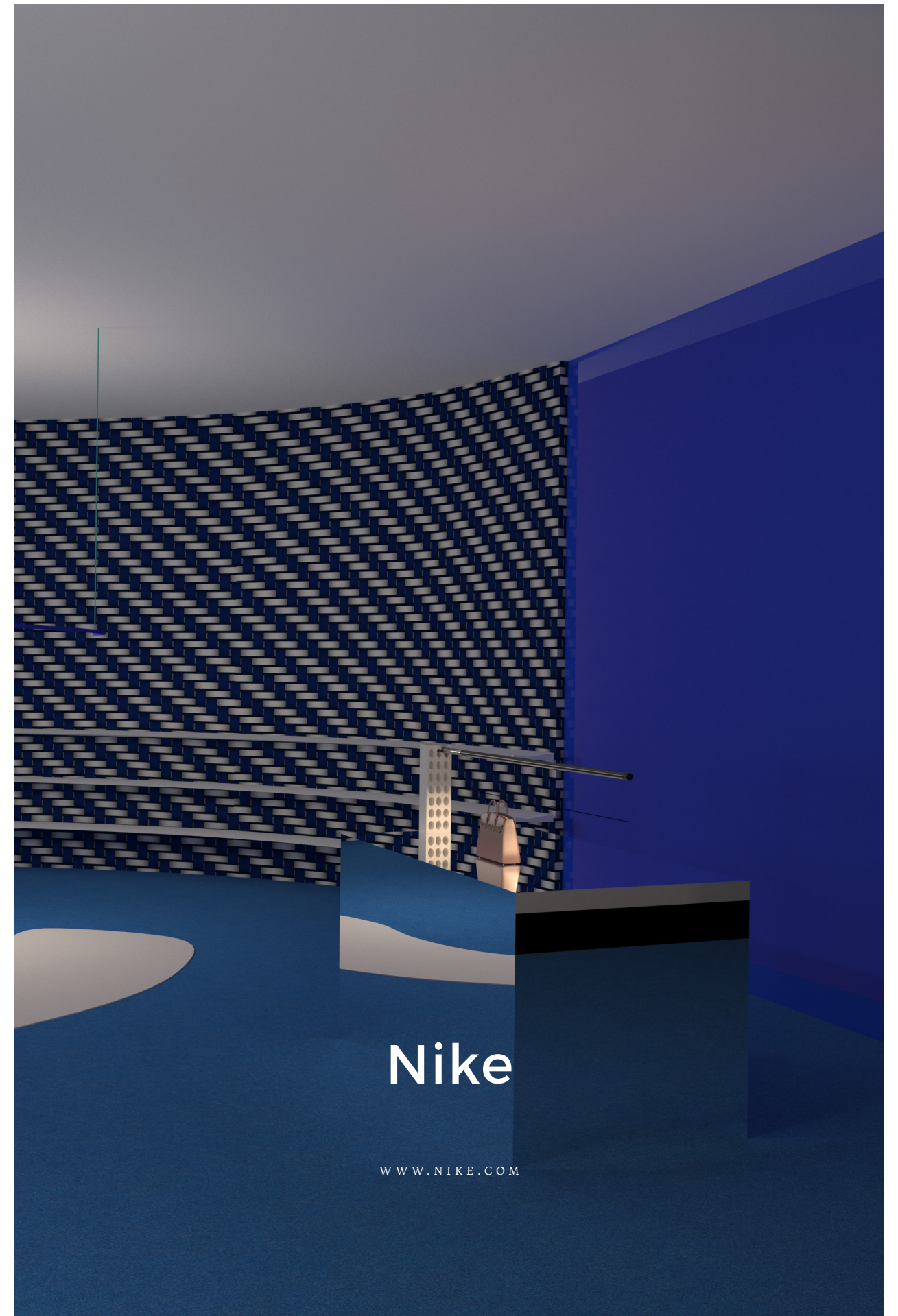
I wanted one more blue carpet but a darker color to highlight where the clothing racks are so there is a hidden boundary.





I wanted the showroom to be modern because the shoes are modern and futuristic, the space should feel and look the same, the showroom needs to have smart technology and smart materials. I chose this to have a lot of space gray color and took a blue color to give the space an interesting look. I wanted the space to feel like an experience when waking into the showroom. The materials are very different and unusual put together.

## SHOWROOM





3

WORKSHOP

## LIGHTING DESIGN



UNDERSTAND LIGHT AND WHY ITS  
IMPORTANT IN ARCHITECTURE

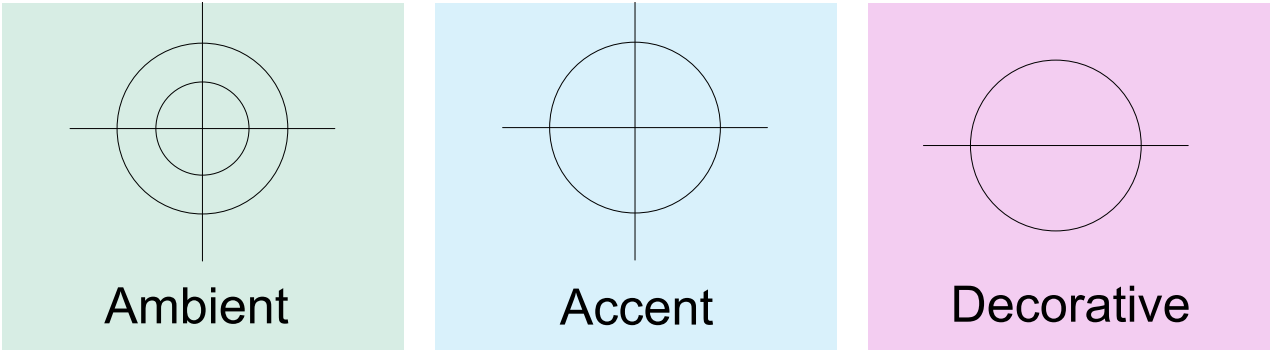
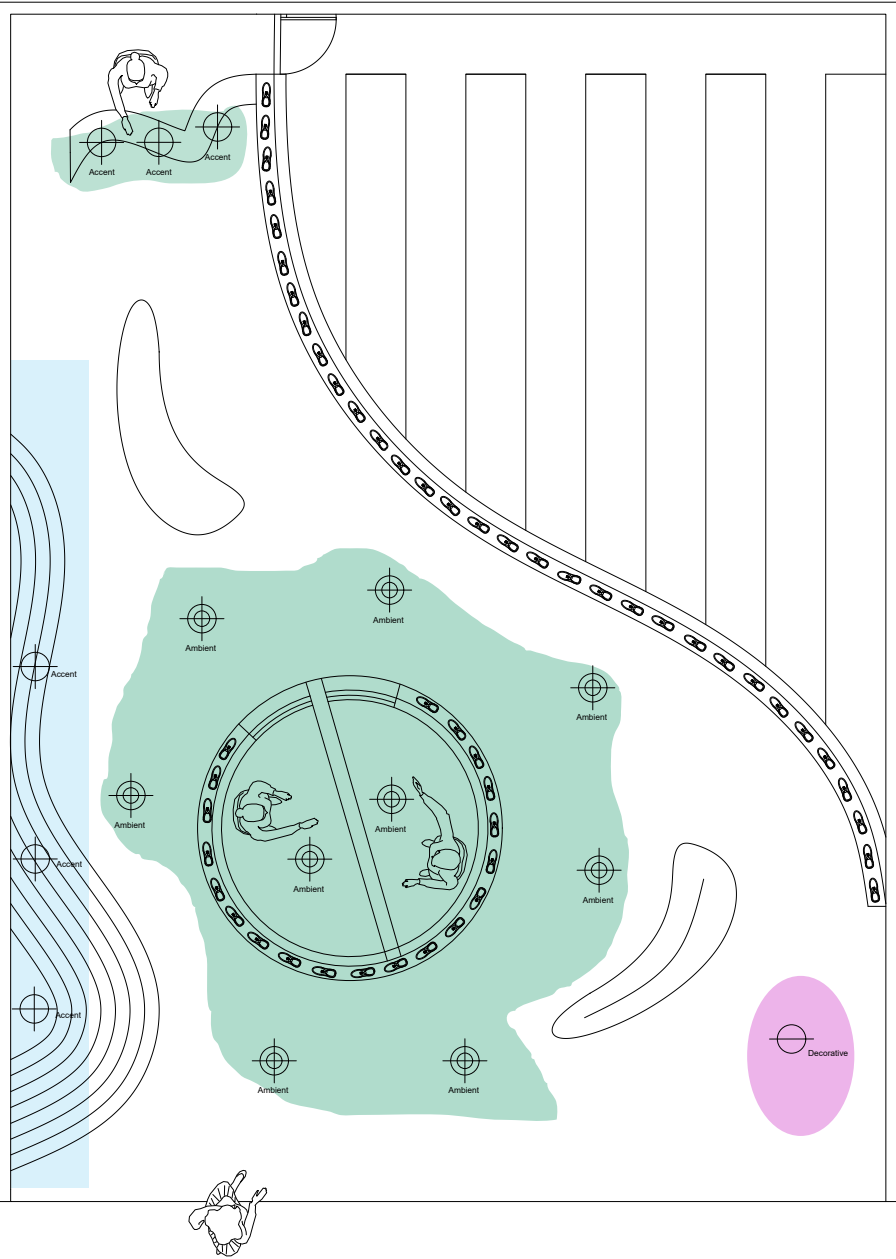
# LIGHTING

SHOWROOM

Lighting is one of the most important factors of interior architecture, it can change everything from how you feel and where you focused towards. Light can be used for different purposes depending on the project and needs different types of light depending on the scene. There are 3 types of light, ambient light which is commonly used for road, and other necessary purposes to make sure people can see. Accent light is used for focusing/looking at elements like art in a museum or at an artist at a concert. Decorative lights are used to play with different ways we might perceive things in an artistic show or display in other words contemplate.

To solve any lighting project is finding out what you are designing for, so the lighting concept - commercial, hospitality, residential... After you have to choose which light type - ambient, accent, decorative. Then you set the lighting criteria/lighting layout, find out which is best for that specific place, it could be - surface, recessed, suspended, rail, adjustment, fix

- The CRI? (Color Render Index) 90 is strong
- The colour temperature is (3000k on ambient lights), (3500k on accent lights), (4500 on decorative lights)





## MEDIA ARCHITECTURE & TECH



PROJECT WHERE MEDIA TECHNOLOGY IS USED

# 4



*Building*

The new kunstmuseum  
basel

*Location in*

Switzerland, basel

*Designed by*

Christ & Gantenbein

The led frieze building was made in 2016 and is based in Switzerland, Basel. The building is for an art museum, the building has worded graphic elements on the outside of the building. As daylight fades, the frieze adapts to the new environmental conditions, becoming more radiant. Horizontal joints cast in shadow are partially illuminated by white LEDs. The frieze can display both text and graphics.

I think the design is interesting and I personally have never seen such a formal building using smart technology in such a classy way, what I mean by that is there's no bright colorful light blicking, its a simple and minimalist design.

# LED FRIEZE





*Building*  
**The Webster**

*Location in*  
**Los Angeles, USA**

*Designed by*  
**David Adjaye, Marc McQuade**

The exterior design features an elegant, fully integrated, LED lighting design that employs reflective technology to achieve complete hardware invisibility. StandardVision also consulted with artist Khalil Joseph to help translate his poetic practice into an all-encompassing blend of visuals. The store is a retail store and very unique differently different from other retail stores. The technology makes it even richer and looks expensive and exclusive.

I choose this design because I like the way the LED lighting was placed on the inside and still being on the outside of the building, the materials around and inside the building are amazing both for the environment and the climate, it's very hot in Los Angeles and the reddish color doesn't attract the sun like other colors. The design is cool because it's mixed with accent materials like red clay and smart media technology.

# THE WEBSTER

